

# ALi M3328C DVB-S Solution

## CB-M3328c-TC-01V01

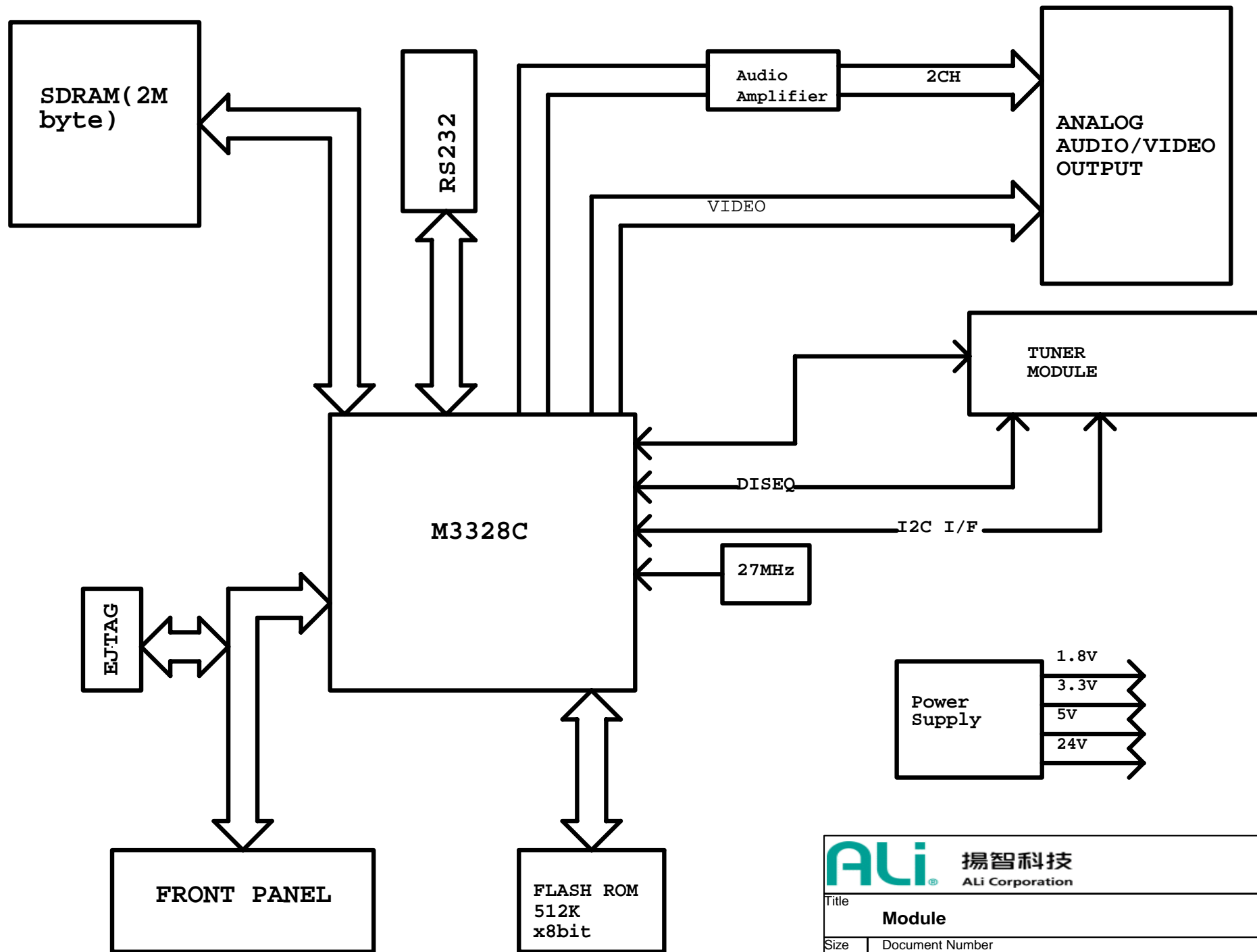
### Change List:

ITEM	Change	DATE	BY
1	Created CB-M3328C-TC-01V01	2005-06-10	qinhe
2	Changed some GPIO of panel.	2005-06-20	Tom
3	Changed DiSEqC Control Circuit	2005-06-20	Tom
4	Add a FLASH as 39LV040	2005-07-6	Tom

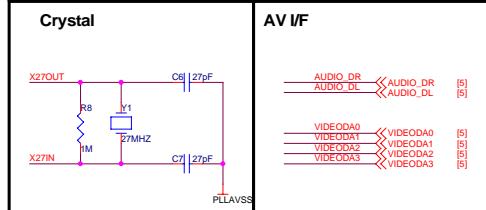
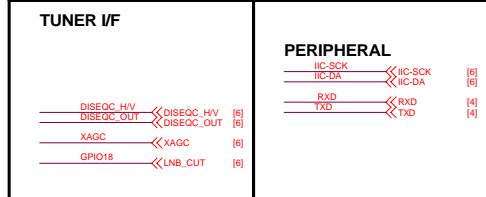
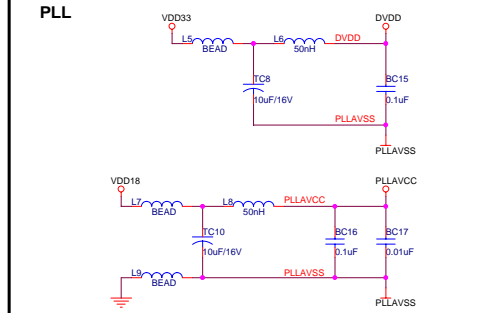
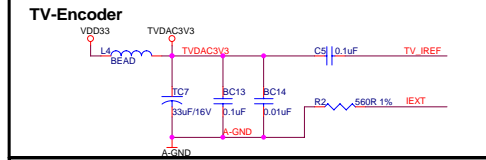
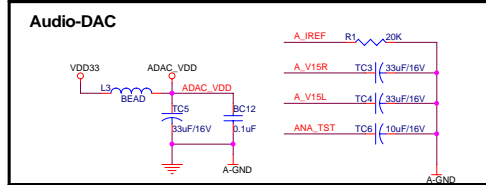
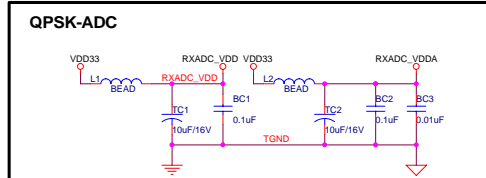
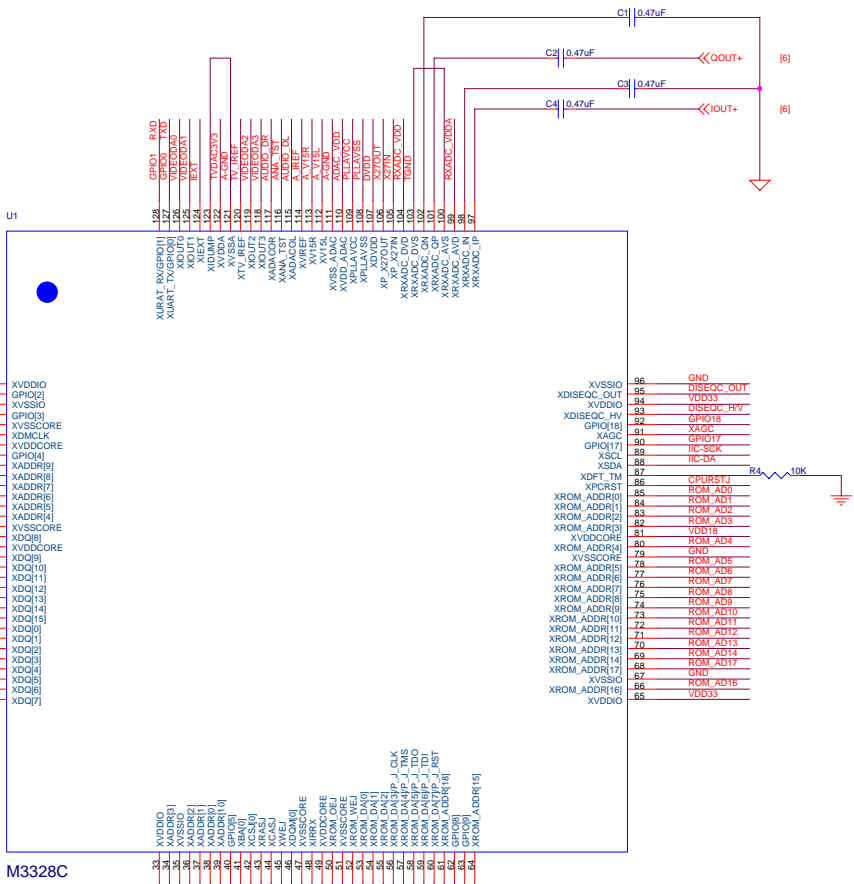
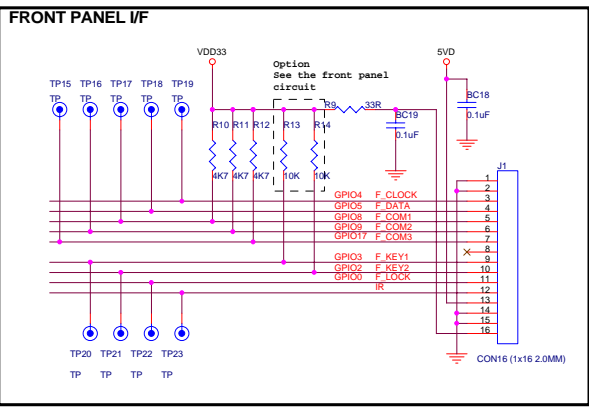
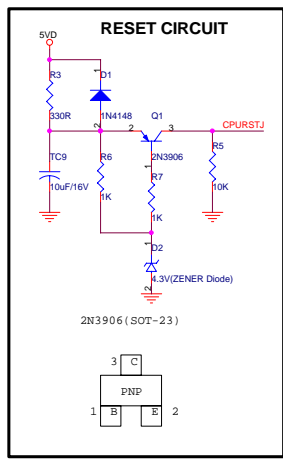
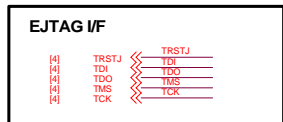
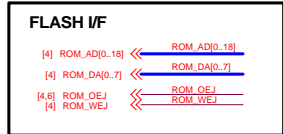
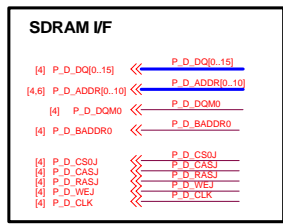
### GPIO MAPPING:

Number	USAGE	USAGE DETAIL	NOTE
GPIO0	F_LOCK	PANEL LOCK LED(0:LIGHT)	
GPIO2	F_KEY2	PANEL KEY DETECT 2	NEED PULL HIGH
GPIO3	F_KEY1	PANEL KEY DETECT 1	NEED PULL HIGH
GPIO4	F_CLOCK	PANEL CLOCK	
GPIO5	F_DATA	PANEL DATA	
GPIO8	F_COM1	PANEL COM1	NEED PULL HIGH
GPIO9	F_COM2	PANEL COM2	NEED PULL HIGH
GPIO17	F_COM3	PANEL COM3	NEED PULL HIGH
GPIO18	LNB_CUT	LNB POWER CUT(1: OFF)	

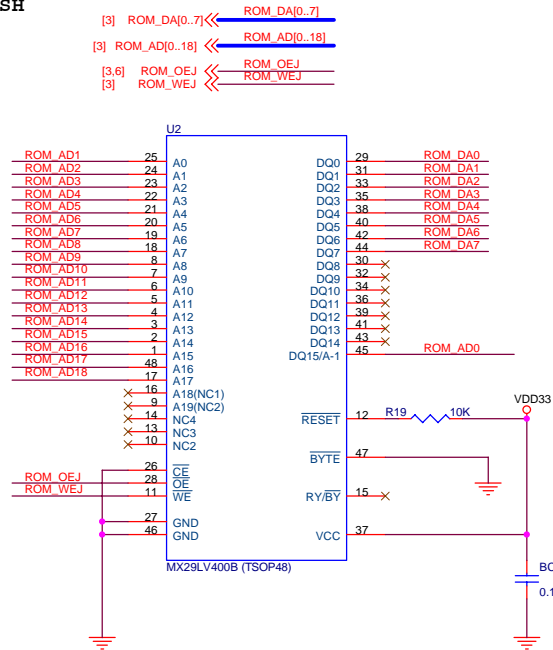
		
Title <b>COVER</b>		
Size A	Document Number M3328C CB	Rev 1.0
Date: Thursday, July 14, 2005		Sheet 1 of 7



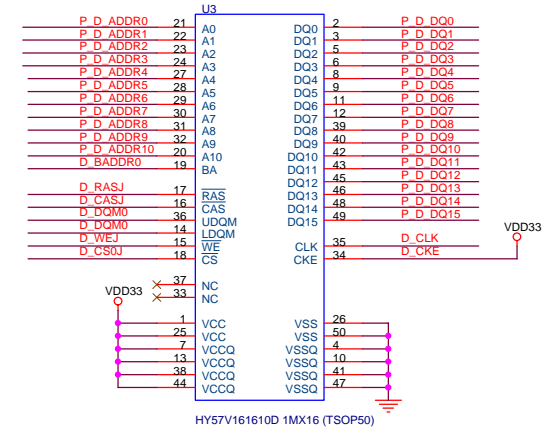
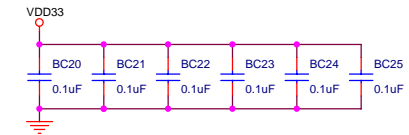
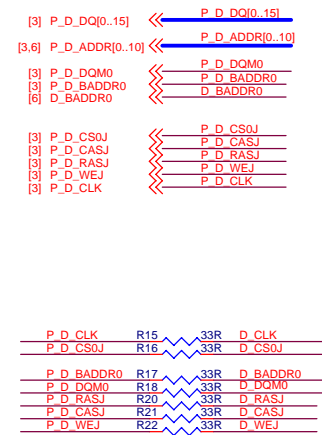
<b>ALI</b> 揚智科技 ALi Corporation		
Title <b>Module</b>		
Size A	Document Number M3328C CB	Rev 1.0
Date: Thursday, July 14, 2005	Sheet 2	of 7



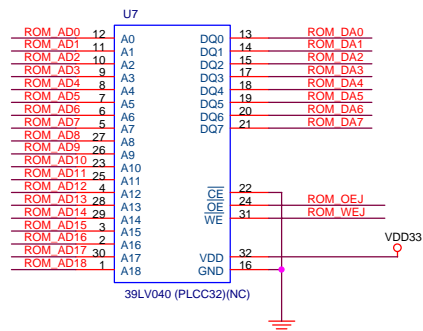
## FLASH



## SDRAM

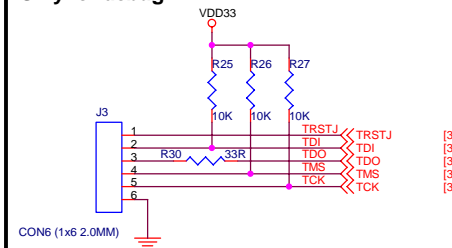


## OPTIONAL

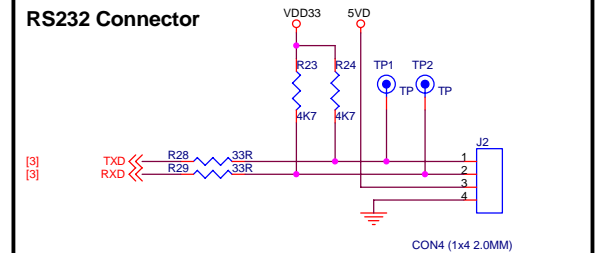


## EJTAG Connector

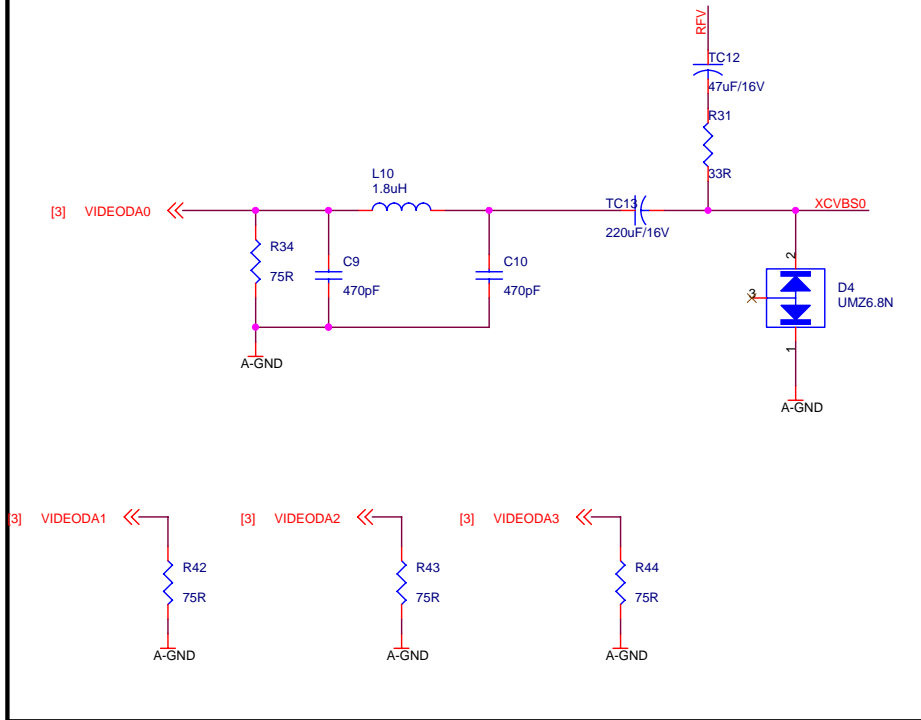
Only for debug



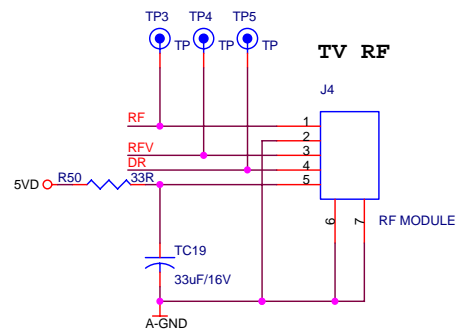
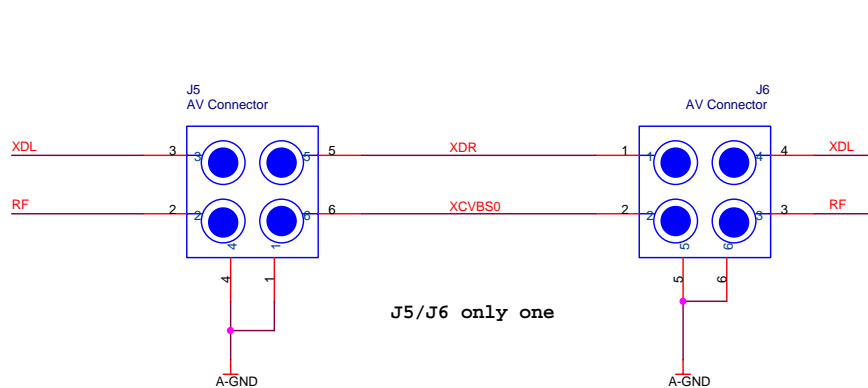
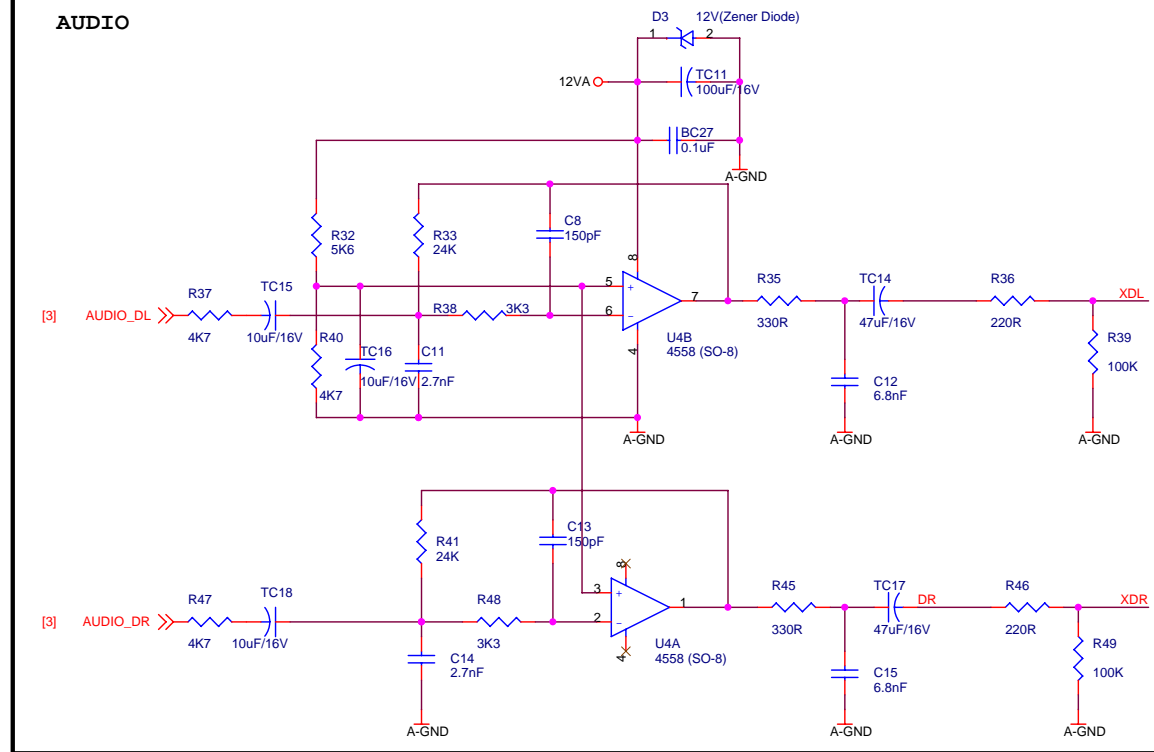
## RS232 Connector



## VIDEO

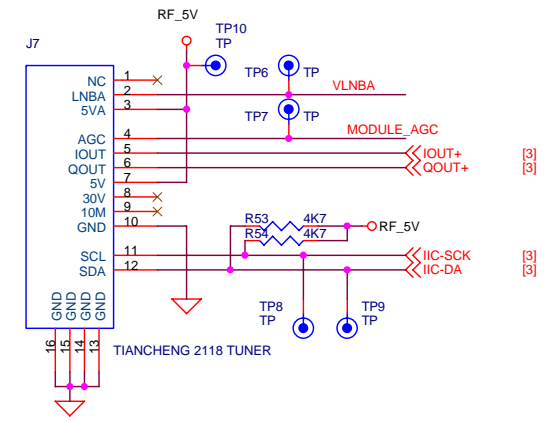
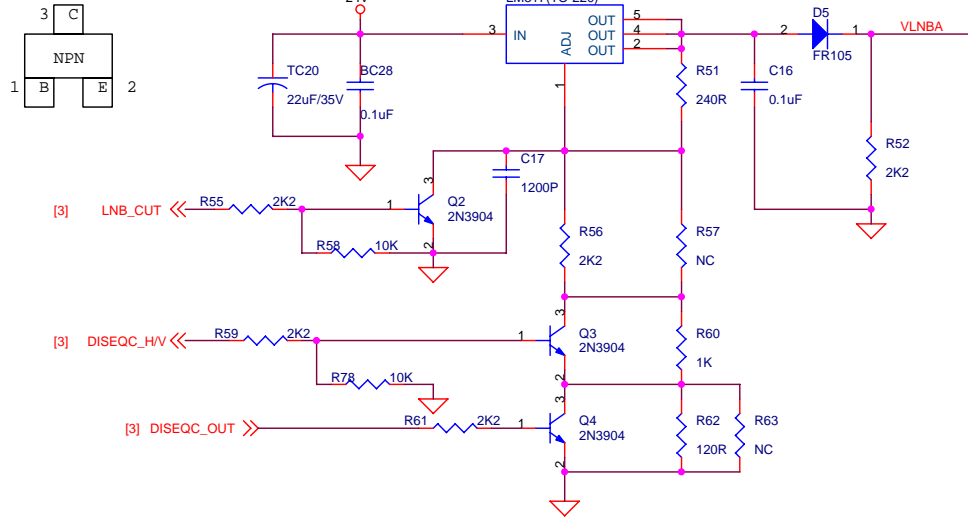


## AUDIO



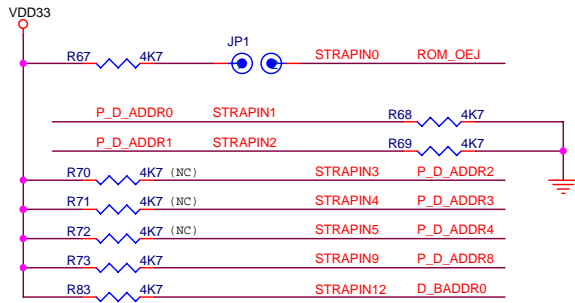
<b>ALI</b> 聚智科技 ALI Corporation	
Title <b>AUDIO/VIDEO</b>	
Size B	Document Number M3328C CB
Date: Thursday, July 14, 2005	Sheet 5 of 7
Rev 1.0	

2N3904 (SOT-23)

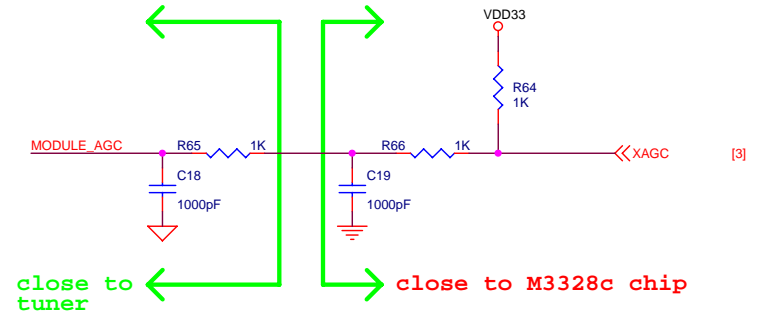


### M3328c Hardware Config

P\_D\_ADDR0,101 <<P\_D\_ADDR[0..10] [3,4]  
D\_BADDR0 >>D\_BADDR0 [4]  
ROM\_OEJ <<ROM\_OEJ [3,4]



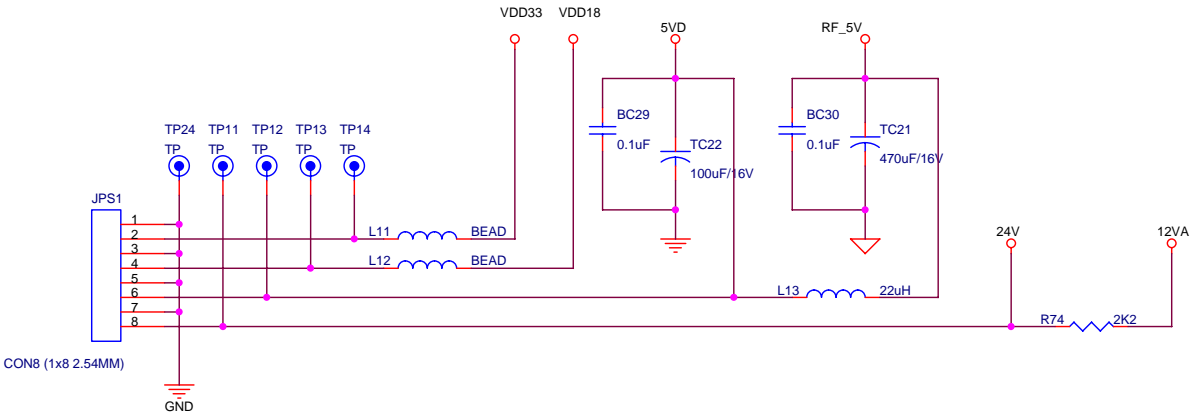
- CPU\_PROBE\_EN**  
STRAPIN[0]: ROM\_OEJ  
0: Disable(DEFAULT)  
1: Enable
- CPU\_PLL\_M**  
STRAPIN[3:1]: P\_D\_ADDR[2..0]  
011: 216M (DEFAULT)  
100: 180M  
101: 154M
- MEM\_PLL\_M**  
STRAPIN[6:4]: P\_D\_ADDR[5..3]  
000: 135M (DEFAULT)  
001: 120M  
010: 98M  
011: 108M
- CHIP\_MODE**  
STRAPIN[11:9]: [P\_D\_ADDR10:8]  
000: Mode0(Flash muxed 8-bit MODE) (DEFAULT)  
001: Model(Flash and GPIO muxed MODE)
- CRYSTAL SELECT**  
STRAPIN[12]: [P\_D\_BADDR0]  
0: 27MHz (DEFAULT)  
1: 13.5MHz



ALI 聚智科技  
ALI Corporation

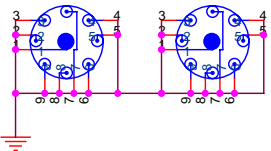
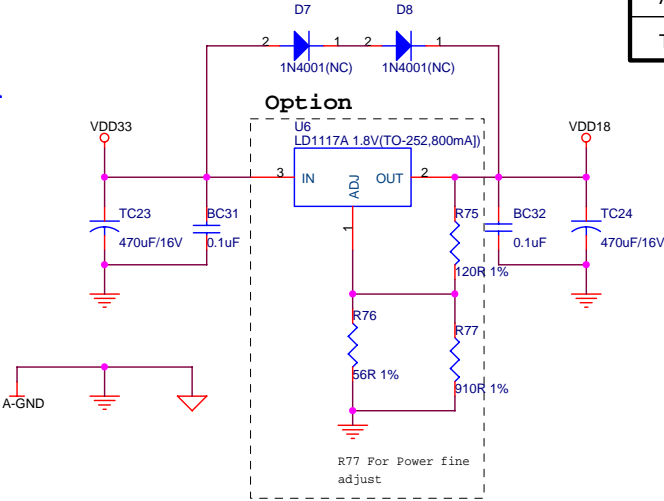
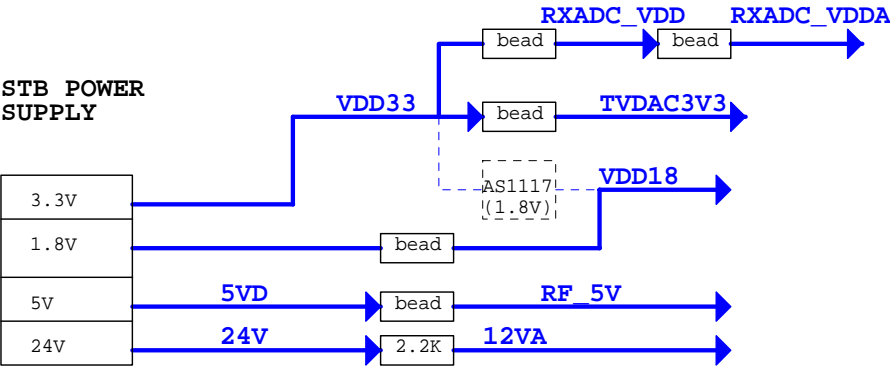
Title		
TUNER		
Size	Document Number	Rev
B	M3328C CB	1.0
Date:	Thursday, July 14, 2005	Sheet 6 of 7

System Board Power Connector



VDD33	M3328C IO PART 3.3V
TVDAC3V3	M3328C VIDEO DAC 3.3V
RXADC_VDD	M3328C QPSK DIGITAL 3.3V
RXADC_VDDA	M3328C QPSK ANALOG 3.3V
VDD18	M3328C CORE 1.8V
5VD	DIGITAL 5V
RF_5V	TUNER POWER 5V
12VA	Audio OP POWER 12V
24V	LNB POWER 24V

GND	Digital GND
A-GND	ANALOG GND
TGND	TUNER RF GND



ALI 瑞普科技 ALI Corporation		
Title <b>POWER</b>		
Size B	Document Number M3328C CB	Rev 1.0
Date Thursday, July 14, 2005	Sheet 7	of 7